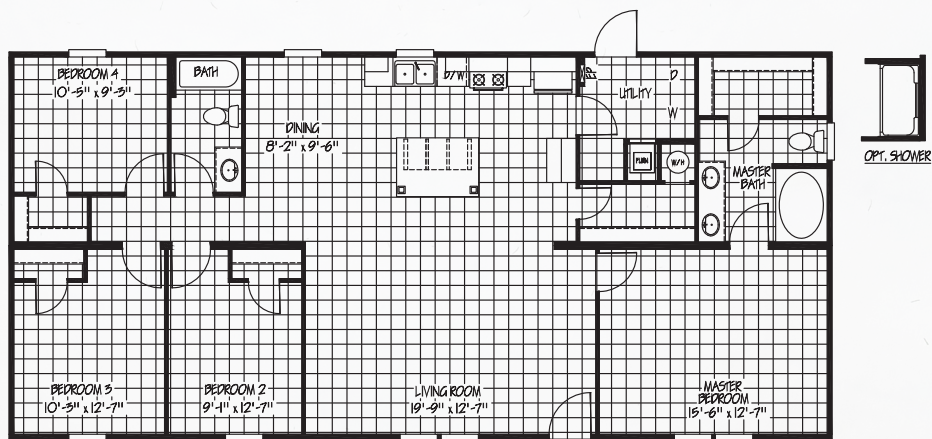


PANAMA

MODEL: **FAC28564A** | **28X56** | **1,474 SQ. FT.** | **4 BED 2 BATH**



STANDARD FEATURES

EXTERIOR

- Dormer
- Low E Thermal Pane Windows with Argon Gas
- 38" Sunburst Front Door with Full View Storm
- Blank Rear Door
- Vinyl Siding W/ OSB Wrap and Vapor Barrier
- Shutters Front Door Side
- 2x6 Floor Joist 16" on Center
- Exterior Outlet Front Door Side

INSULATION

- R-21 Blown Fiberglass Roof (Formaldehyde Free)
- R-11 Fiberglass Insulation in Walls (Kraft Back)
- R-11 Fiberglass Insulation in Floors
- Thermal Zone 2

INTERIOR

- Pex Plumbing with Legend Smart Click Fittings
- 8 Foot Flat Ceilings
- Upgraded Lino Throughout
- Ceiling Fan in Living Room
- Wire and Brace for Ceiling Fan All Bedrooms
- LED Flush Mounted Ceiling Lights
- 2" Blinds Throughout
- Lever Handles on Interior Doors

KITCHEN

- 3/4" Hardwood Cabinet Doors
- Lined Overhead Cabinets
- Walk In Pantry
- Spring Loaded Faucet with Sprayer

APPLIANCES

- Black Refrigerator
- Black Range
- Black Dishwasher
- 30 Gallon Dual Element High Efficiency Water Heater

OPTIONS AVAILABLE:

- Upgraded Insulation R-38-13-22
- Smart Panel Siding
- Entertainment Center
- Entertainment Center with Electric Fireplace and Wood Shiplap
- A/C Disconnect
- Gas Furnace/Gas Range
- 100 Amp Service
- Wind Zone 2
- Wind Zone 3

BATHS

- 60" Fiberglass Garden Tub/Shower Combo in Master Bath
- 54" Fiberglass Tub Guest Bath Tub/Shower
- China Sinks in Both Baths
- Double Sinks Master Bath
- Elongated Toilets
- Water Shut Off at Toilet

UTILITY

- Total Electric with 200 Amp Service
- Master Water Shut-off Valve

- Stainless Steel Appliances
- Plumbed for Ice Maker (SS Appliances Only)
- Ceiling Fan in Master Bedroom
- 60" Fiberglass Shower with Glass Door in Master Bath
- Overhead Air
- 50 Gallon Water Heater